

CONFERENCE OF THE WATER DIRECTORS OF THE EURO-MEDITERRANEAN AND SOUTHEASTERN EUROPEAN COUNTRIES

CYPRUS Country Report

by
Christodoulos Artemis
Director
Water Development Department



Athens, 6 & 7 November 2006



Hellenic Government
Ministry for the Environment
Ministry of Foreign Affairs



EU Commission
DG Environment
DG AidCo



**Mediterranean Component of
the EU Water Initiative**
European Commission



**Euro-Mediterranean
Partnership**



**Euro-Mediterranean
Information System
on Know-How in the
Water Sector**



**Regional Monitoring and
Support Unit**
MEDA-Water Programme

Outline of Presentation

1. Geographic, Social and Economic Context
2. Water Resources Situation
3. Institutional Context
4. On-going Processes and Related Funding
5. Actual State, Needs and Challenges
6. Future Plans
7. Conclusions

Location and Physical Description



1. Geographic, Social & Economic Context

- Total Surface Area 9251 km²
- Rainfall 280 – 1000mm, average 460mm
- Population of Area under Government Control 800,000
- Average Net Annual Runoff including Groundwater replenishment 370Mm³
- Average Annual Water Availability 462 m³/person

GNP & Agriculture

GNP/Capita €16.500

Agricultural Contribution 2,84 %

Population employed in Agriculture 6,3%

Agricultural Water Demand 69%

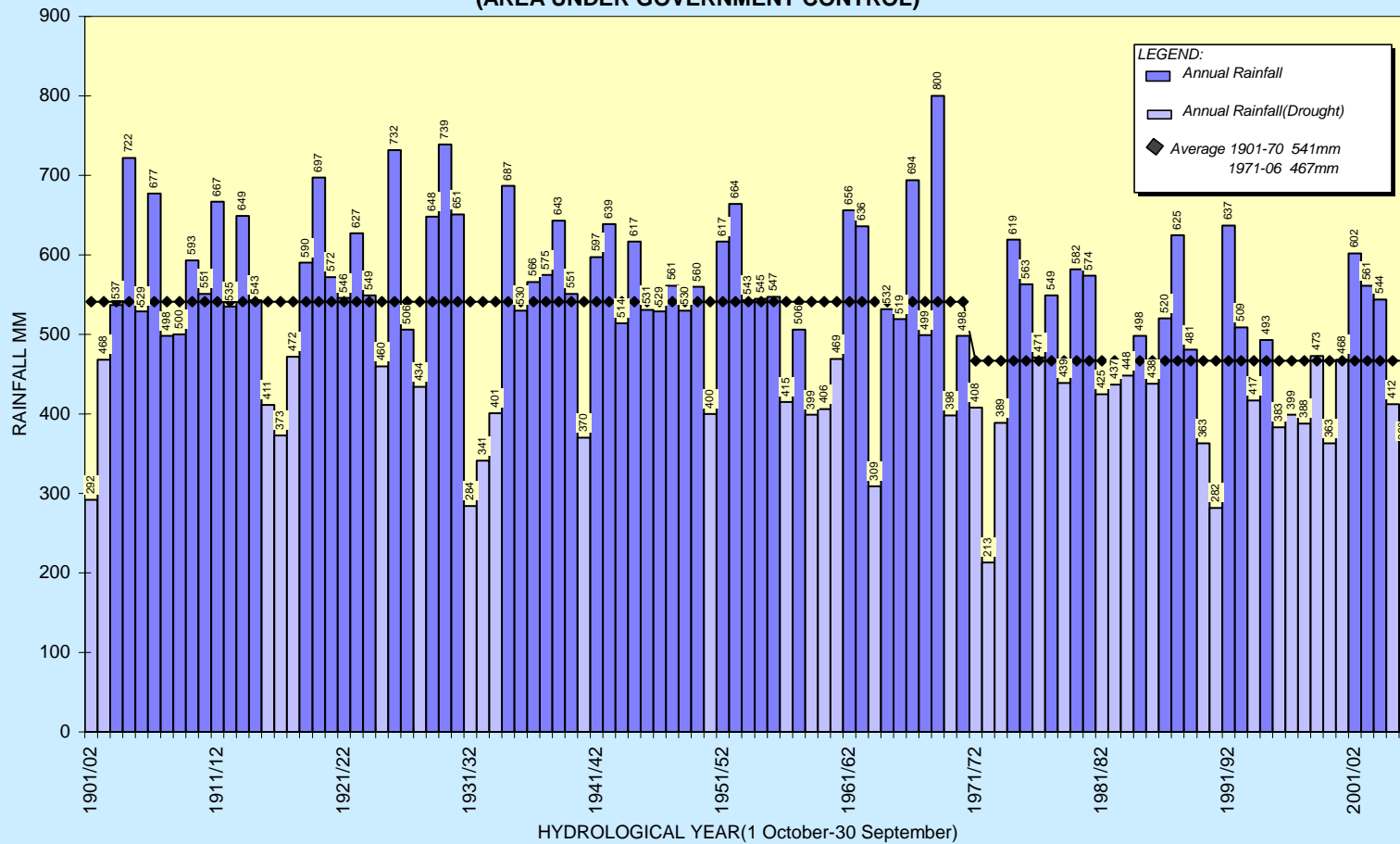
2. Water Resources Situation

- Rainfall drop by 15% since 1970
- Evapotranspiration 86%
- Runoff 370Mm³
- Over-abstraction of aquifer 29Mm³/year
- Demands: Agriculture 182Mm³/year
Domestic 85Mm³/year

CONFERENCE OF THE WATER DIRECTORS OF THE EURO-MEDITERRANEAN AND SOUTHEASTERN EUROPEAN COUNTRIES, ATHENS, 6-7 NOVEMBER 2006

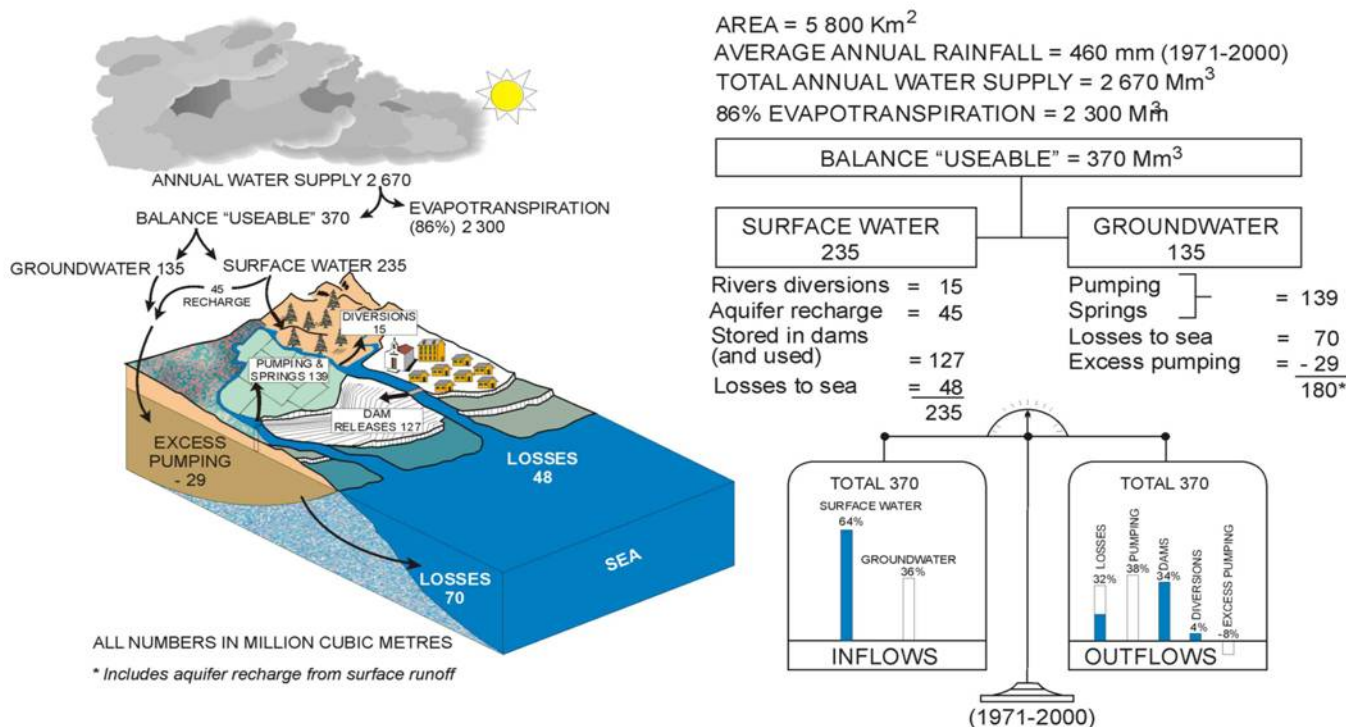
Precipitation

AVERAGE ANNUAL RAINFALL OF CYPRUS
1901/1970-1971/06
(AREA UNDER GOVERNMENT CONTROL)

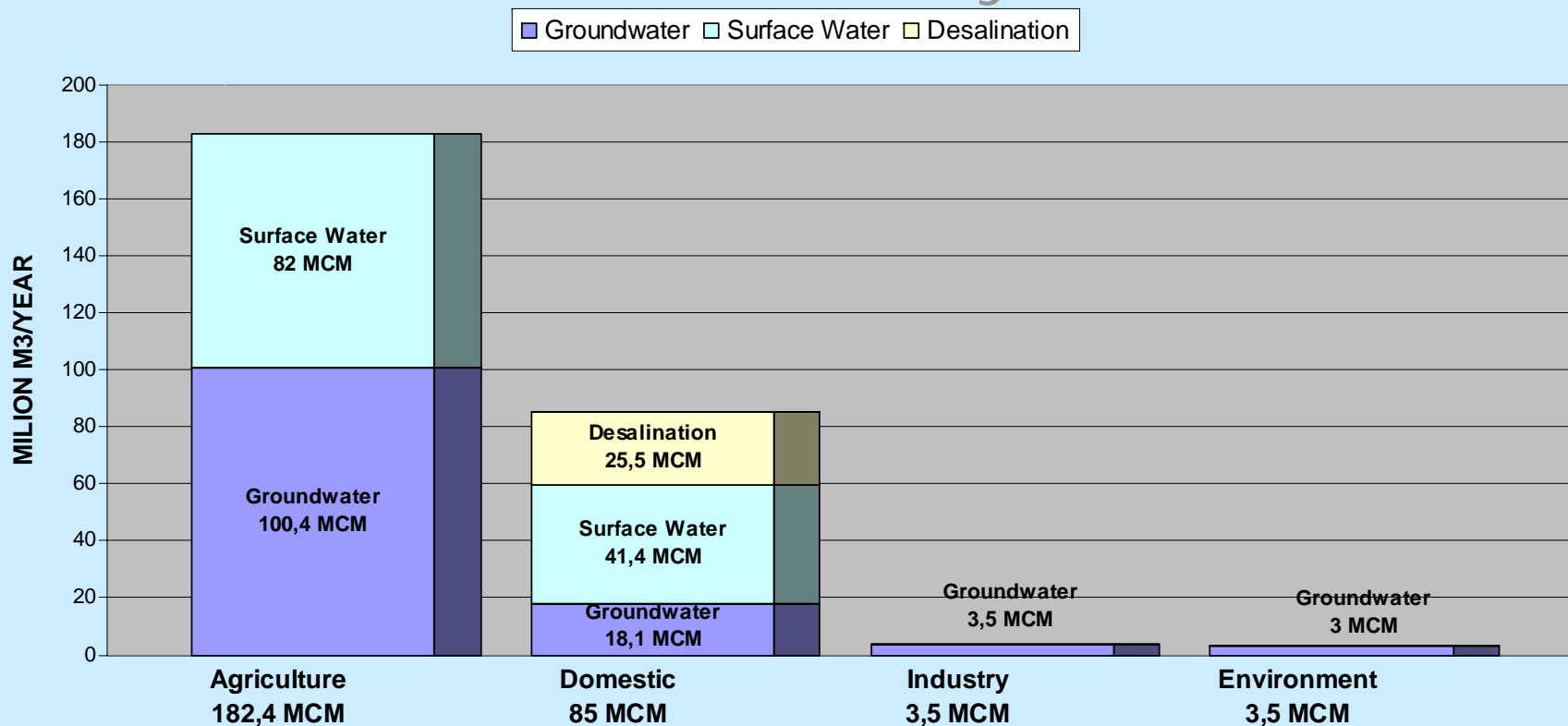


Water Balance

WATER BALANCE FOR CYPRUS (AREA UNDER GOVERNMENT CONTROL)



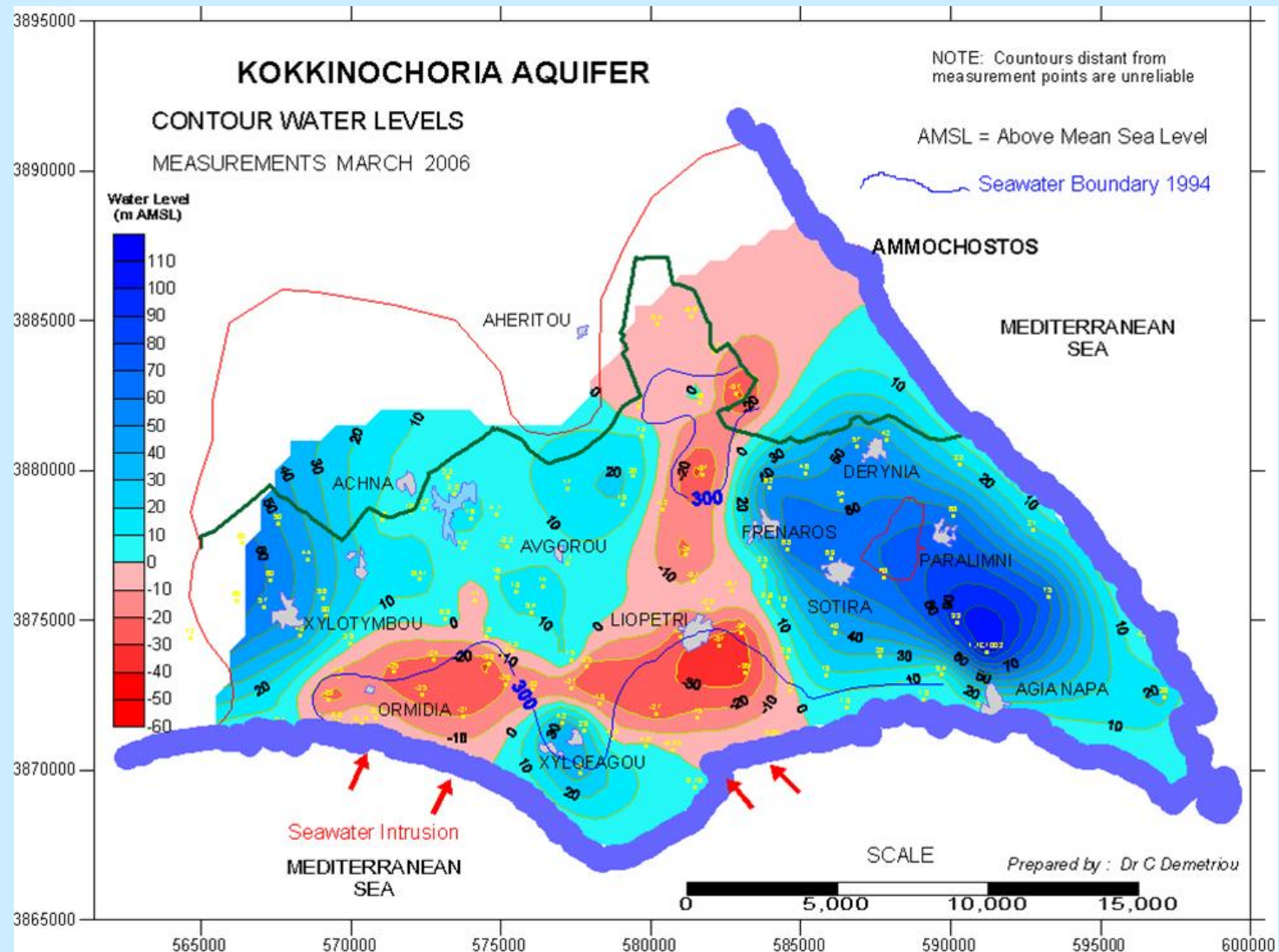
Water Demand by sector and anticipated sources used for the year 2006



Threats to Water Resources

- Over abstraction of the aquifers,
seawater intrusion
- Water scarcity and multiyear droughts
- Pollution from agriculture, pig farms,
garbage disposal sites

CONFERENCE OF THE WATER DIRECTORS OF THE EURO-MEDITERRANEAN AND SOUTHEASTERN EUROPEAN COUNTRIES, ATHENS, 6-7 NOVEMBER 2006



Sewage Collection and Treatment

- Presently cover population of 442.000
- Plan to cover population of 700.000 by 2012

3. Institutional Context

- Water Development Department of the Ministry of Agriculture, Natural Resources and Environment is the main water agent
- Other authorities in the Ministries, Water and Sewage Boards, Municipalities and Community Councils for services
- Efforts to concentrate all government water functions to a single authority have been made but so far without success

4. On-going processes and related funding

- Government Investments in place in water sector € 1,74 billion (2001 Value at a compounding rate of 7,5%) and 2002-2005 investments around € 100 million
- Water Boards investments in 2005 around € 1,6 million
- Sewage Boards investments in 2005 around € 500 million

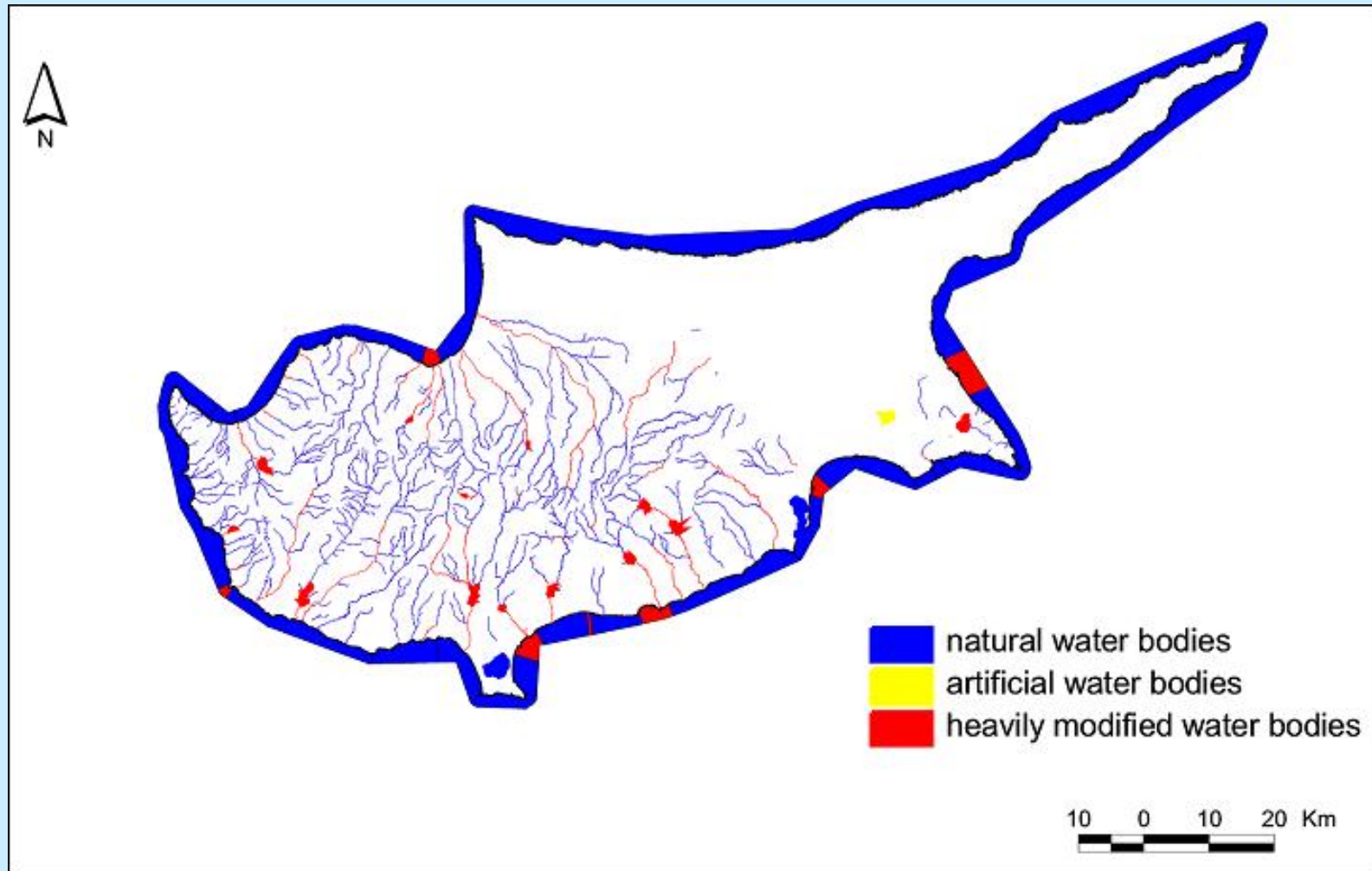
5. Actual State, Needs and Challenges

- All households supplied with potable water
- Efforts to integrate recycled water to water equation
- Desalination Plants
- Sewage treatment Plants to cost € 900 million by 2012
- Water Framework Directive

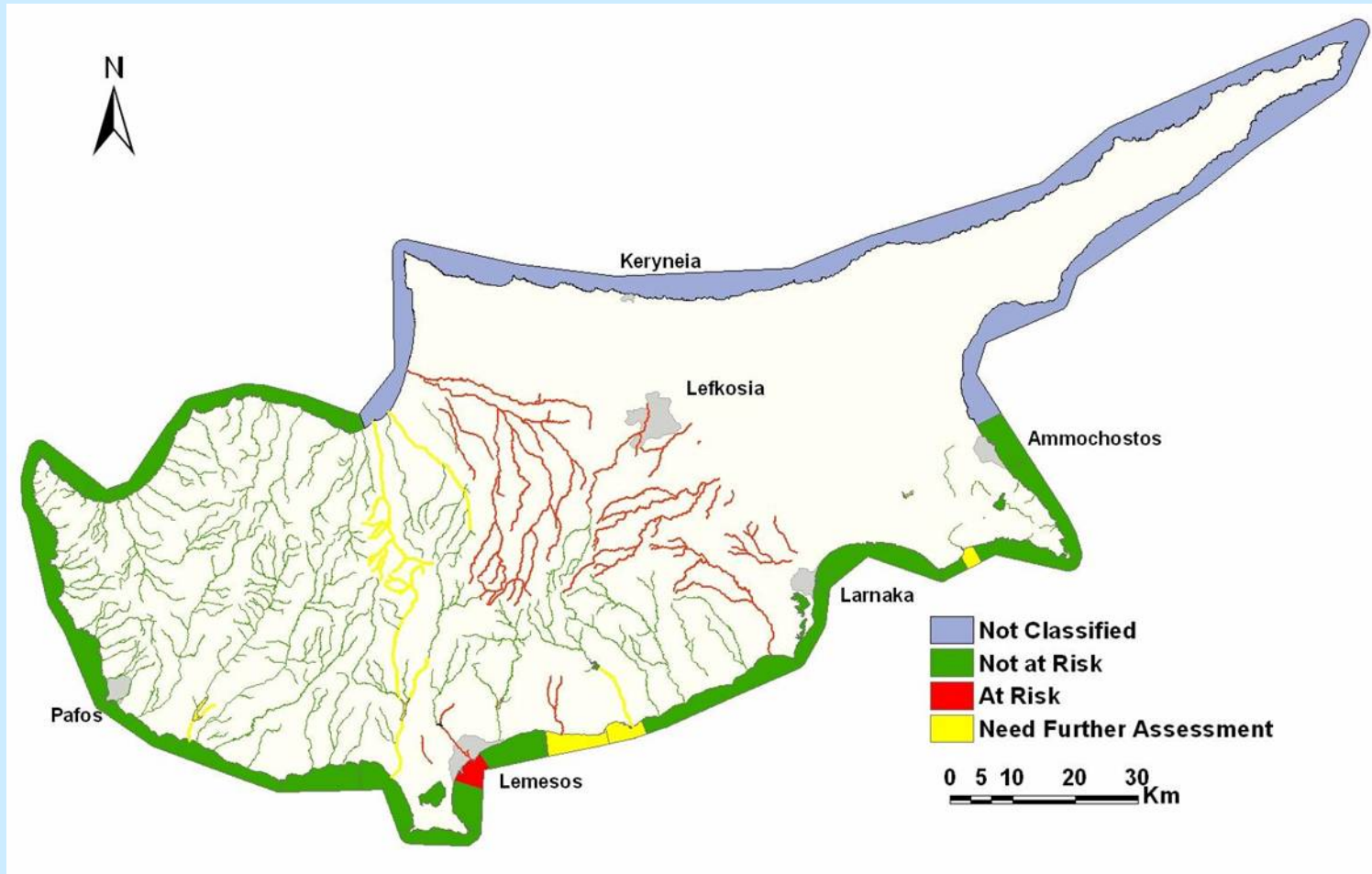
**CONFERENCE OF THE WATER DIRECTORS OF THE EURO-MEDITERRANEAN
AND SOUTHEASTERN EUROPEAN COUNTRIES, ATHENS, 6-7 NOVEMBER 2006**

Water body	Number of water bodies not 'at risk'	Number of water bodies 'at risk'	Needing further assess- ment	Total number of water bodies	% of water bodies 'at risk'
Rivers	125	35	7	167	
Heavily modified	32	11	6	49	
<i>Total</i>	<i>157</i>	<i>46</i>	<i>13</i>	<i>216</i>	<i>21%</i>
Lakes	5	0	0	5	
Heavily modified	8	1	3	12	
Artificial	0	0	1	1	
<i>Total</i>	<i>13</i>	<i>1</i>	<i>4</i>	<i>18</i>	<i>6%</i>
Coastal waters	18	0	2	20	
Heavily modified	3	1	1	5	
<i>Total</i>	<i>21</i>	<i>1</i>	<i>3</i>	<i>25</i>	<i>4%</i>

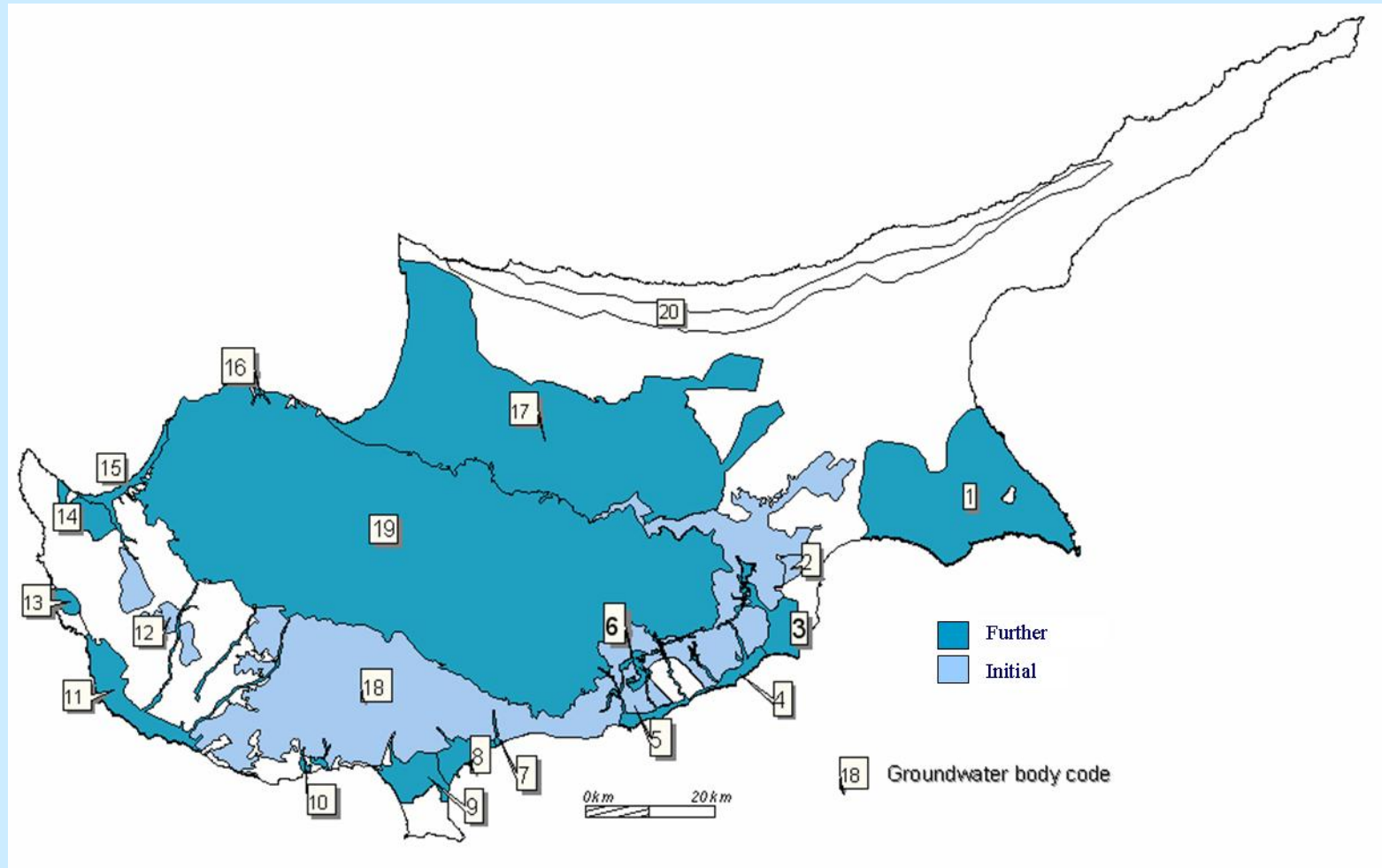
Water Bodies



Surface Water Bodies



Groundwater bodies



6. Future Plans

- Management Plan for WFD
 - Drought Management Sub-Plan
 - Intensification of Demand Management Measures
 - Nature Protection
- } by December 2009

7. Conclusions

Obstacles for implementing future challenges:

- National Capacity
- Technology and Equipment
- Technical and Financial Support
- Political will
- Change of attitude of users

**CONFERENCE OF THE WATER DIRECTORS OF THE EURO-MEDITERRANEAN
AND SOUTHEASTERN EUROPEAN COUNTRIES, ATHENS, 6-7 NOVEMBER 2006**

Thank you for your attention



**CONFERENCE OF THE WATER DIRECTORS OF THE EURO-MEDITERRANEAN
AND SOUTHEASTERN EUROPEAN COUNTRIES, ATHENS, 6-7 NOVEMBER 2006**

Contact:

Christodoulos Artemis
Director
Water Development Department
Demosthenis Severis Ave.
++ 35722803300
++ 35722675019
director@wdd.moa.gov.cy
<http://www.moa.gov.cy/wdd>

